

**RADIANCE  
COLLECTION**

Seriously  
safe.  
Seriously  
boosting.



**BATA INDUSTRIALS**  
THE SAFETY SHOE

# Safety shoes no longer have to be boring!

**The Radiance collection is designed with an eye for style and a mind for safety**

**With its sporty look and wide range of features to deliver maximum protection and all day comfort, each shoe model is a perfect blend of design, safety and comfort.**

The trendy Radiance footwear collection is made of lightweight, breathable fabrics. To provide perfect grip, the shoes come with a robust Vibram® outsole. This type of outsole is best known for its superior quality and performance in terms of SRC slip resistance. Each shoe model is EN ISO 20345:2011 certified and features a composite protective toecap, as well as a non-metal anti-penetration insole. All these specific features are designed to keep your feet safe, healthy and comfortable.

But what if protection and style are equally important to you? The Radiance collection got you covered! With these sporty safety shoes you add a little extra oomph to your work outfit. At first glance the shoe looks like an ordinary, subtle colored sneaker. But a look inside reveals the most advanced technology for maximum comfort. Take a closer look and you will find even more special features, such as a lightweight EVA midsole with 3B-Motion technology: Bata's Boosting Base. This technology gives your feet an enormous power boost with every step you take. All this, in combination with a footbed made from hi-elastic EVA, maximizes the level of comfort and energy return.

The feeling after working on your feet all day is what makes these shoes so unique: your feet still feel comfortable and you have plenty of energy left! **RADIANCE SAFETY SHOES, SERIOUSLY BOOSTING.**

To give your feet the highest level of comfort, the Radiance collection features a special lightweight EVA midsole, using our own developed 3B-Motion technology: Bata's Boosting Base. The special molecular EVA structure is arranged in such a way that very little energy is lost upon ground impact. The use of specially formulated EVA material with high cushioning and elastic properties increases the level of comfort even further. What's more, you will get a real power BOOST when you are walking and, as a result, you will feel more energized.

# BOOST YOUR FEET

**3B-MOTION:  
BATA'S BOOSTING BASE**



## STABILITY

The midsole hardness is 48 shore C. Wearing tests have proven that this is the right amount of softness to get the best balance between maximum feet comfort and stability. To ensure maximum stability, a stabilizer is placed on the upper at the heel.

## ENERGY RETURN CUSHION

As a global leader in safety shoes, Bata Industrials has carefully adapted the highly boosting properties of EVA in the midsole. EVA is a common cushioning material in modern sports shoes, but the movements you make while work are different from when you are jogging; you lift, turn, kneel, bend and so on. It is therefore essential to get maximum feet and knee support. That is why we have performed numerous density tests in order to create a perfect balance between cushioning, energy return and stability.

## COMFORT

By experimenting with the hardness of the midsole, we did not have to settle for a hard, uncomfortable rubber midsole or a structureless fluffy midsole. By incorporating our 3B-Motion technology, we have managed to create a perfect rebound at the heel area, and therefore a smooth and comfortable feel. You can feel the boost in each step!

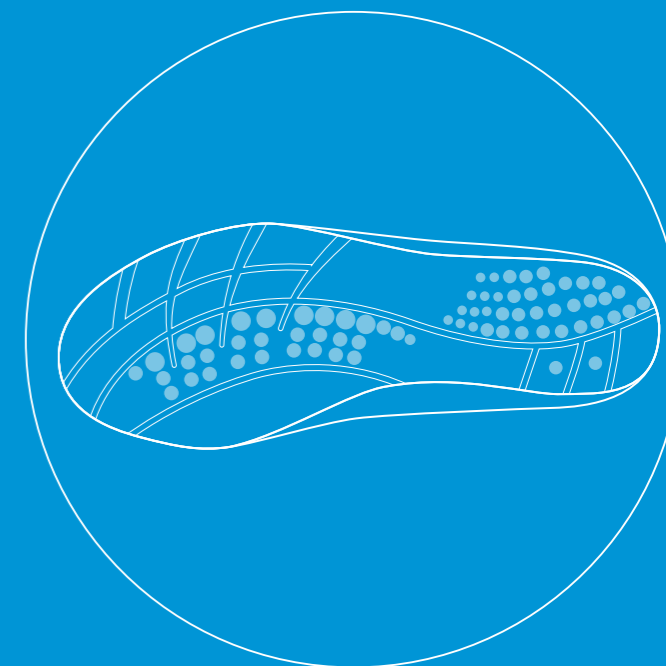
# Extra comfort

## Unique cushioning footbed



Besides the Boosting Base, our Radiance collection provides the ultimate cushioning for all day comfort. The footbed is made of hi-elastic EVA material, well known for its safety, extremely light weight, breathability and maximum shock absorption. This unique cushioning footbed is designed to significantly increase the energy return. The footbed, together with the special lightweight EVA midsole, will make you feel like you are walking on a cloud.

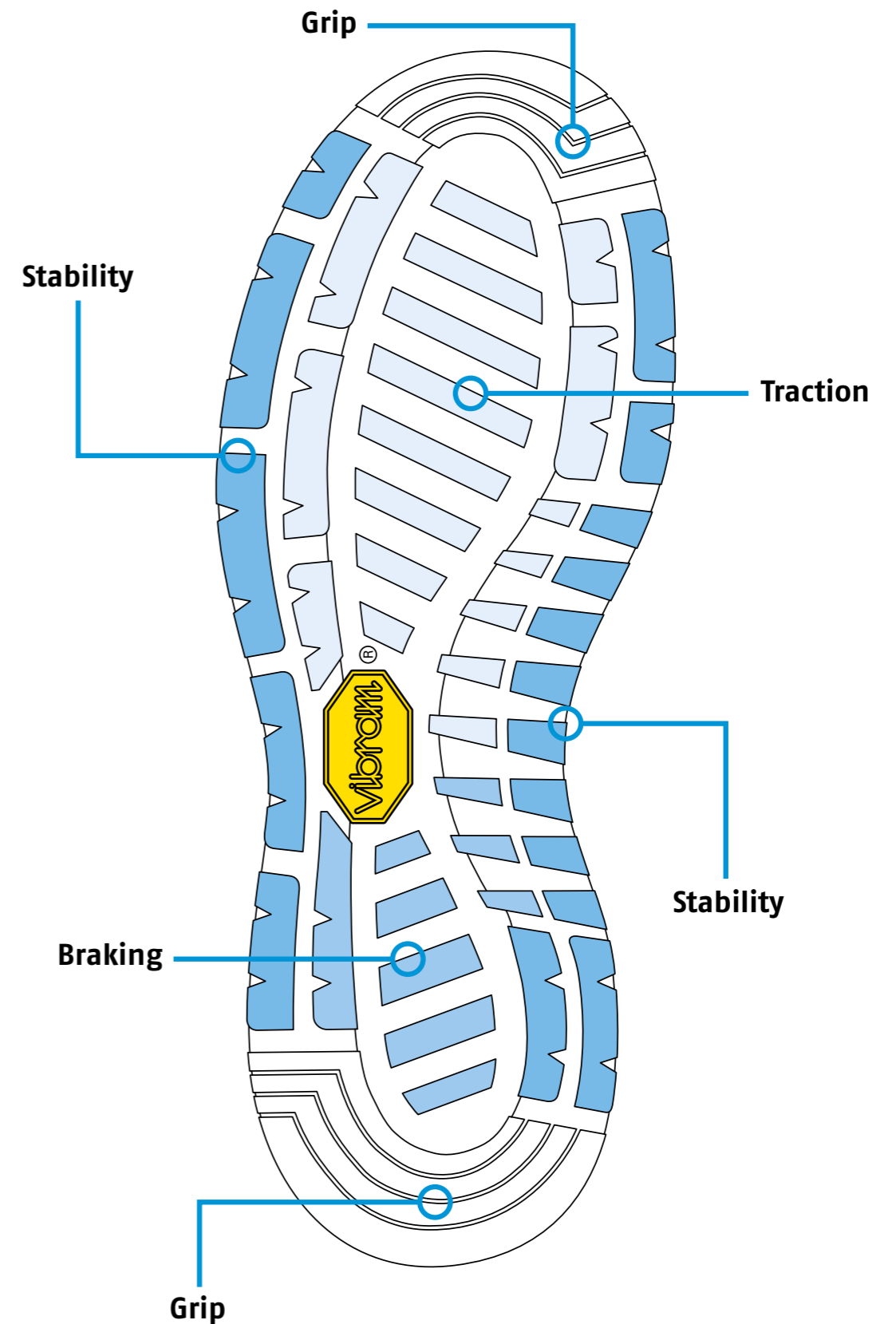
- > ENERGY RETURN CUSHION
- > LIGHTWEIGHT
- > BREATHABLE
- > FLEXIBLE
- > SHOCK ABSORBING
- > ANTISTATIC ESD
- > ANTI-BACTERIAL



# Grip

## The Vibram® outsole

The Vibram® outsole is best known for its performance in terms of SRC slip resistance. Vibram® is the world's leading specialist in outsoles for a variety of footwear. The Italian company is named after its founder, Vitale Bramani. Bramani invented the first rubber lug shoe soles. A lug sole is a thick rubber sole with deep indentations, which improves stability and traction. These soles were first used on mountaineering boots, replacing leather soles fitted with hobnails.



Our safety shoes are fitted with a Vibram® outsole to ensure maximum stability, grip and comfort, and at the same time channel more energy into each step.

# Radiance collection

Seriously safe. Seriously boosting.

## ENERGY S3 ESD

- › Mesh upper/seamless TPU film/abrasion resistant TPU overnose
- › Punched eyelets
- › Composite toecap
- › FlexGuard® composite penetration resistant insert
- › EVA /rubber outsole (Vibram®)
- › EVA footbed
- › Width W
- › Sizes: 35-47
- › Uk size range: 2-12 (including 6.5 and 9.5)



## UP S3 ESD

- › Mesh upper/seamless TPU film/abrasion resistant TPU overnose
- › Punched eyelets
- › Composite toecap
- › FlexGuard® composite penetration resistant insert
- › EVA /rubber outsole (Vibram®)
- › EVA footbed
- › Width W
- › Sizes: 35-47
- › Uk size range: 2-12 (including 6.5 and 9.5)



## FIT S1P ESD

- › Fly knitted/seamless TPU film/abrasion resistant TPU overnose
- › Punched eyelets
- › Composite toecap
- › FlexGuard® composite penetration resistant insert
- › EVA/rubber outsole (Vibram®)
- › EVA footbed
- › Width W
- › Sizes: 35-47
- › Uk size range: 2-12 (including 6.5 and 9.5)



## VIM S1P ESD

- › Fly knitted/seamless TPU film/abrasion resistant TPU overnose
- › Punched eyelets
- › Composite toecap
- › FlexGuard® composite penetration resistant insert
- › EVA/rubber outsole (Vibram®)
- › EVA footbed
- › Width W
- › Sizes: 35-47
- › Uk size range: 2-12 (including 6.5 and 9.5)



## SPARK S1P ESD

- › Fly knitted/seamless TPU film/abrasion resistant TPU overnose
- › Punched eyelets
- › Composite toecap
- › FlexGuard® composite penetration resistant insert
- › EVA/rubber outsole (Vibram®)
- › EVA footbed
- › Width W
- › Sizes: 35-47
- › Uk size range: 2-12 (including 6.5 and 9.5)





**SERIOUSLY.**